

G-H SYSTEMS INC.

Featuring



A Common Wall Activated Sludge Process



Custom Engineered from the
Headworks to the Effluent.

*Designed to treat the water and
the waste.*



ONE SLUDGE CONCEPT

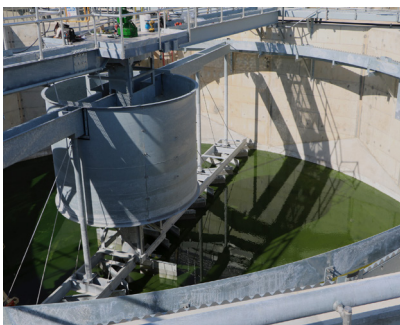
- Efficient Layout - A flexible small footprint approach to meet your plants requirements.
- Low Maintenance - More focus on operating, less on failing equipment.
- Operator Friendly - Designed with front to back single level access.
- Cost Effective - Thoughtful designs with an emphasis on value and future expandability.

A Hydra-Solids™ plant utilizes the activated sludge process. Designed properly for the amount of waste and the amount of water, a Hydra-Solids™ plant provides simple operation and a long life expectancy with total flexibility. Whether it is a new layout or an integration with existing tankage, the Hydra-Solids™ design works effortlessly.

Hydra-Solids™ can be designed for basic full nitrification of ammonia as well as chemical or biological nutrient removal for total nitrogen and/or phosphorus removal.

The Hydra-Solids™ plant is a One Sludge common wall concept that starts in the rapid mix basin where raw wastewater is mixed with return activated sludge to become mixed liquor. The mixed liquor is then split between the various treatment trains, effectively creating a single sludge...or One Sludge. Then continues through the rest of the plant as usual.

- Pre-Aeration Basin
- Headworks (Screening and Grit Removal)
- Rapid Mix Basin
- Process Basins (Aeration always, Anaerobic and/or Anoxic sometimes)
- Clarifier (Liquid/Solid Separation)
- Filtration
- Disinfection
- RAS to Rapid Mix
- WAS to Aerobic Digestion/Sludge Holding
- Clarifier Scum to Sludge Holding
- Sludge Dewatering or Liquid Hauling



G-H SYSTEMS INC.